



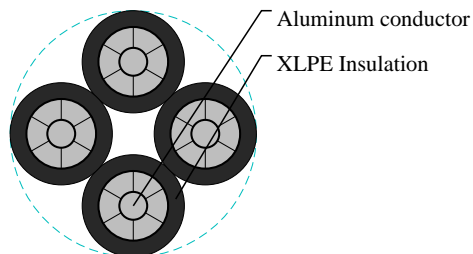
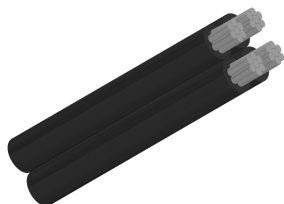
# Caledonian

Aluminium Conductor Cables

[www.caledonian-cables.com](http://www.caledonian-cables.com)

[marketing@caledonian-cables.com](mailto:marketing@caledonian-cables.com)

## 600/1000V ABC –Aerial Bundled Cables to DES/LVC/ABC Specification & IEC 60502 (AL/XLPE) 4C25



### APPLICATIONS

The aerial bundled cables designed for overhead distribution lines have all conductors made of aluminium 1350 and insulated with XLPE. Can be used for fixed installation as overhead power lines up to 1000 V incl.

### STANDARDS

DES/LVC/ABC Specification

IEC 60502

### CABLE CONSTRUCTION

Conductor (for either phase, neutral or street lighting):The conductors shall be of H68 aluminium conductor and compacted circular stranded (RM).

Insulation:XLPE.

Assembly:The cores shall be laid up with a left-hand lay.

### DIMENSION AND PARAMETERS

No. of Cores × Cross-sectional Area	Approx. Overall Diameter	Cable Weight	min. breaking load of conductor strand	Current rating in the air
No.×mm <sup>2</sup>	mm	kg/km	kN	A
4x25 RM	21.5	420	3.5	84